



## Kernel VBA Password Recovery

---

“Instant Password Recovery Tool for  
VBA Projects Files”

## PRODUCT GUIDE

# Table of Contents

---

1.	Introduction to Kernel for VBA Password Recovery .....	4
1.1	Using this Manual .....	4
1.2	About Kernel for VBA Password Recovery .....	5
1.3	Salient Features .....	5
1.4	Who Should Use this Software? .....	5
2.	Getting Started .....	6
2.1	Installation Pre-requisites.....	6
2.2	Downloading Kernel for VBA Password Recovery for the First Time .....	7
2.3	Install Kernel for VBA Password Recovery .....	7
2.4	Start Kernel for VBA Password Recovery.....	7
2.5	Uninstall Kernel for VBA Password Recovery .....	7
3.	Software Interface .....	9
3.1	Tool-bar.....	9
3.2	Buttons Used.....	9
4.	Recovering VBA Passwords .....	10
5.	Full Version .....	13
5.1	Requirement of Full Version.....	13
5.2	Purchasing Full Version.....	13
6.	Support.....	14
7.	Troubleshooting .....	15
7.1	Common Issues .....	15
7.2	Frequently Asked Questions .....	15
8.	Legal Notices .....	16
8.1	Copyright .....	16
8.2	Trademark .....	16
8.3	Disclaimer .....	16
8.4	License Agreement .....	16

# Table of Figures

---

Figure 4.1: Main Window ..... 10

Figure 4.2: ‘Open’ window ..... 10

Figure 4.3: Selected file ..... 11

Figure 4.4: Window showing the properties of selected file ..... 11

Figure 4.5: Password Recovered..... 12

# 1. Introduction to Kernel for VBA Password Recovery

---

Welcome to the user manual for Kernel for VBA Password recovery, the most effective and convenient VBA password recovery tool available that effectively restores the passwords and allows accessing protected VBA files. This user manual comprises step by step guidelines on using Kernel for VBA Password Recovery.

## 1.1 Using this Manual

---

This user manual is intended to guide users on using Kernel for VBA Password Recovery. We suggest that first time users should read this user manual completely and carefully before proceeding to use the software. However, if you are an experienced user, you can use the table of contents to find out information pertaining to the tasks that you need to perform by using Kernel for VBA Password Recovery.

You can use the table of contents to navigate through different sections of this user manual. The table of contents lists all the sections that are contained in this user manual in chronological order. The user manual comprises the following sections:

- Introduction
- Getting Started
- Software Interface
- Recovering VBA password
- Full Version
- Support
- Troubleshooting
- Legal Notices

Certain abbreviations have been used throughout this manual. For clear understanding of the contents of this user manual, please go through the list of abbreviations, mentioned below, before reading the manual.

### 1.1.1 List of Abbreviations

VBA: Visual Basic Application

MS: Microsoft

RAM: Random Access Memory

MB: Mega-Byte

GB: Giga-Byte

## 1.2 About Kernel for VBA Password Recovery

---

Kernel for VBA Password Recovery is password recovery software for password protected VBA files. This software recovers the lost or forgotten passwords from VBA projects created using MS Office files. The software displays the working password to unlock the VBA project.

Kernel for VBA Password Recovery performs **instant** password recovery. It resets the password instantly despite the length and complexity of the password. The software scans the password protected VBA file and resets the stored password. The software overwrites the original password and provides you with an alternate password instead of original password. The recovered password is the alternate password and helps you unlocking the VBA file.

## 1.3 Salient Features

---

Salient features of Kernel for VBA Password Recovery include:

- Recovers password from protected VBA project files
- Supports password recovery of VBA projects created using MS Office 2003/XP/2000/97 having extension **.doc, .xls, .xla**
- Provides **instant** password recovery
- **Free demo** displays the first **two** characters of the recovered password
- User friendly, no technical skills required

## 1.4 Who Should Use this Software?

---

Kernel for VBA password recovery is an efficient and result-oriented password recovery tool which unlocks Visual Basic Application projects passwords in no matter of time. Many times we tend to forget those long passwords or somehow lose the password.

Kernel for VBA password recovery restores the password and lets you access password protected VBA project files. The software is suitable for professional authors who are using protected VBA project files for their office work.

## 2. Getting Started

---

Now that you have understood the features and potential of Kernel for VBA Password Recovery, you are ready to get hands on experience of the software. To start recovering password, you will first need to download and install this software.

It is strongly recommended that before installing Kernel for VBA Password Recovery, you should go through the installation pre-requisites for the software to ensure that your computer is appropriately configured to run the software.

### 2.1 Installation Pre-requisites

---

The various pre-requisites for installing and running Kernel for VBA Password Recovery can be broadly classified into two major categories – Hardware requirements and Software requirements.

#### 2.1.1 Hardware Requirements:

The hardware requirements for installing the software are as follows:

- Pentium Class Processor
- Minimum 64MB RAM (128 MB recommended)
- 10MB for Software installation

#### 2.1.2 Software Requirements:

The software requirements for installing the software can further be grouped into two categories– Operating system requirements and Microsoft Office version requirements. The requirements are as follows:

##### 2.1.2.1 Operating System Requirements

Supported operating systems:

- Windows Vista
- Windows XP
- Windows 2003
- Windows 2000

##### 2.1.2.2 Microsoft Office Version Requirements

Supported MS Office versions:

- MS Office 2003

- MS Office XP
- MS Office 2000
- MS Office 97


## 2.2 Downloading Kernel for VBA Password Recovery for the First Time

---

After checking your computer with the prescribed system requirements for Kernel for VBA Password Recovery, you can download and install the software on your computer. You can buy the full version of the software from any one of our authorized resellers – Element5, Asknet and 2CO.

If you want to try using Kernel for VBA Password Recovery before buying it, you can download the evaluation version from the following link:

<http://www.nucleustechologies.com/download-vba-password-recovery.php>

 You can recover password of VBA project files using the evaluation version of Kernel for VBA Password Recovery; however, the demo version will display the first two characters of the recovered password, in order to get the complete password Full version has to be purchased.

## 2.3 Install Kernel for VBA Password Recovery

---

After downloading the installer file of Kernel for VBA Password Recovery, you can install the software by running the file. To install Kernel for VBA Password Recovery:

1. Double-click the Kernel for VBA Password Recovery installer. Follow the on-screen instructions.

The **Setup Installation Complete** screen will be displayed.

2. Click **Finish** to launch the software.

## 2.4 Start Kernel for VBA Password Recovery

---

To start Kernel for VBA Password Recovery:

Click the **Start → All Programs → Kernel for VBA Password Recovery**

Alternatively, you can launch Kernel for VBA Password Recovery by double-clicking the shortcut icon available on the Desktop and Quick Launch icon.

## 2.5 Uninstall Kernel for VBA Password Recovery


---

You may need to uninstall and re-install Kernel for VBA Password Recovery. To uninstall Kernel for VBA Password Recovery:

1. Click the **Start → All Programs → Kernel for VBA Password Recovery → Uninstall Kernel for VBA Password Recovery**

A warning message will be displayed.

2. Click '**Yes**' to uninstall Kernel for VBA Password Recovery.

 Before proceeding to uninstall Kernel for VBA Password Recovery, you must ensure that the software is not running.

You can alternatively uninstall Kernel for VBA Password Recovery from the **Control Panel** by performing the following steps:

1. Click the **Start Menu → Control Panel** and then double click the **Add or Remove Programs** icon.
2. Select **Kernel for VBA Password Recovery** and click **Remove**.

A warning message will be displayed.

3. Click '**Yes**' to uninstall Kernel for VBA Password Recovery.

# 3. Software Interface



---

Now that Kernel for VBA Password Recovery has been installed on your computer, you can start using the software after getting acquainted with the software interface.

## 3.1 Tool-bar

---





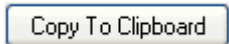
The tool-bar in Kernel for VBA Password Recovery provides a convenient and user-friendly method to perform certain actions. Read the information in the table below to find out about the tool-bar buttons:

Button	Button Name	Button Description
	Help	Select to view User-guide of Kernel for VBA password recovery
	About	Select to view version-related and support information of Kernel for VBA password recovery

## 3.2 Buttons Used

---

Apart from the standard options available in the tool-bar, following are the main buttons used in the process of recovery:

	Click to browse and select the file containing VBA project file
	Click to proceed with the process
	Click to recover the lost or forgotten password
	Click to view main window of the software
	Click to copy the password to the clipboard

## 4. Recovering VBA Passwords

---

Now that you have complete familiarity of the user interface of Kernel for VBA Password Recovery, you are ready to recover passwords. To recover password of protected VBA project files:

1. Launch Kernel for VBA Password Recovery.

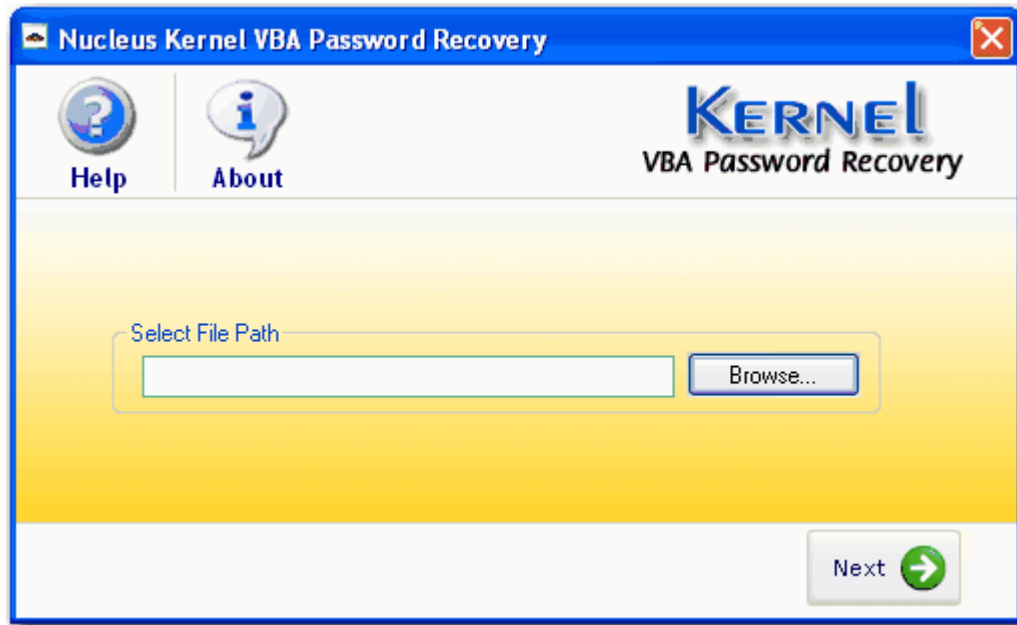


Figure 4.1: Main Window

2. Click the **Browse** button to locate the file containing VBA project file from your system and click **Open**.

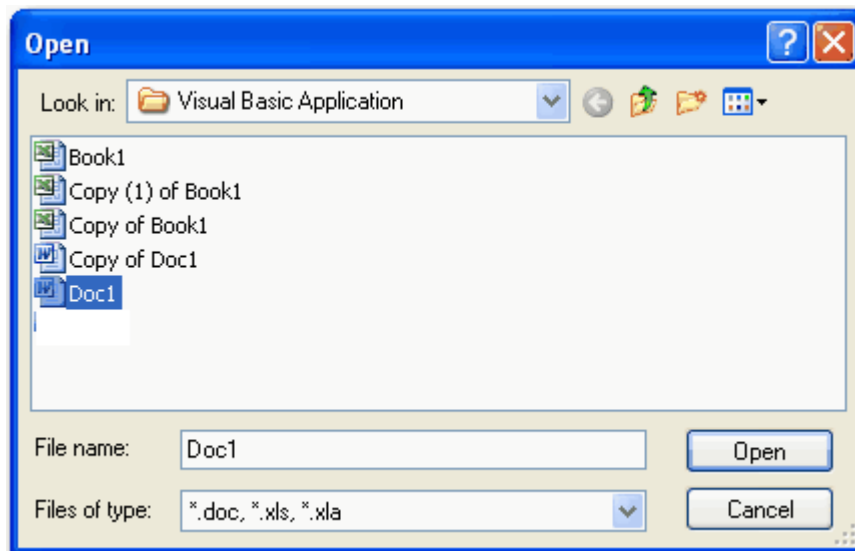


Figure 4.2: 'Open' window

3. Click **Next** to proceed with the process.

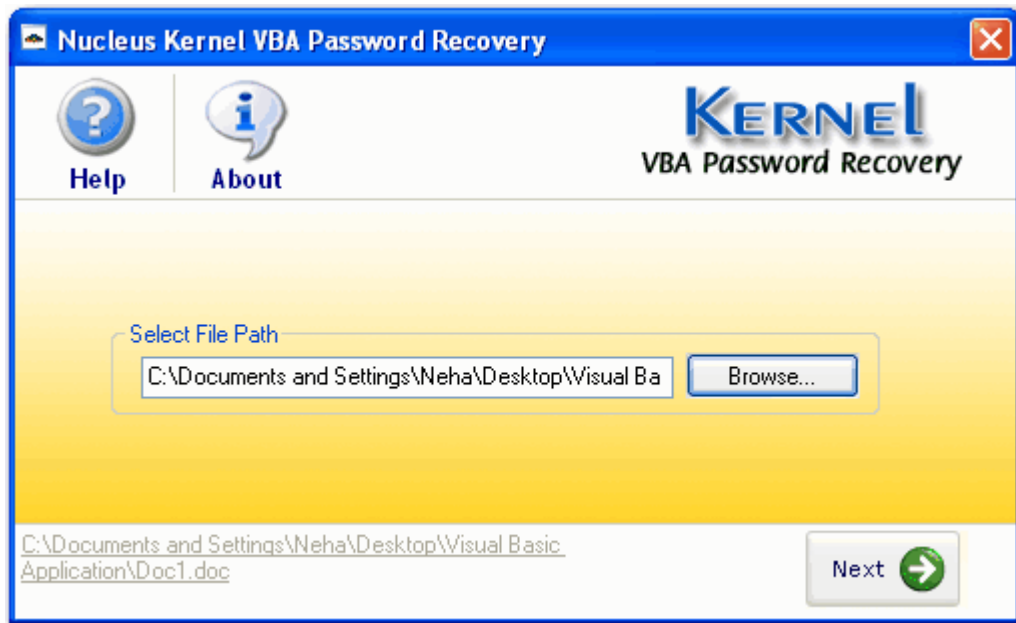


Figure 4.3: Selected file

4. Click the **Recover** button to recover the lost or forgotten password.

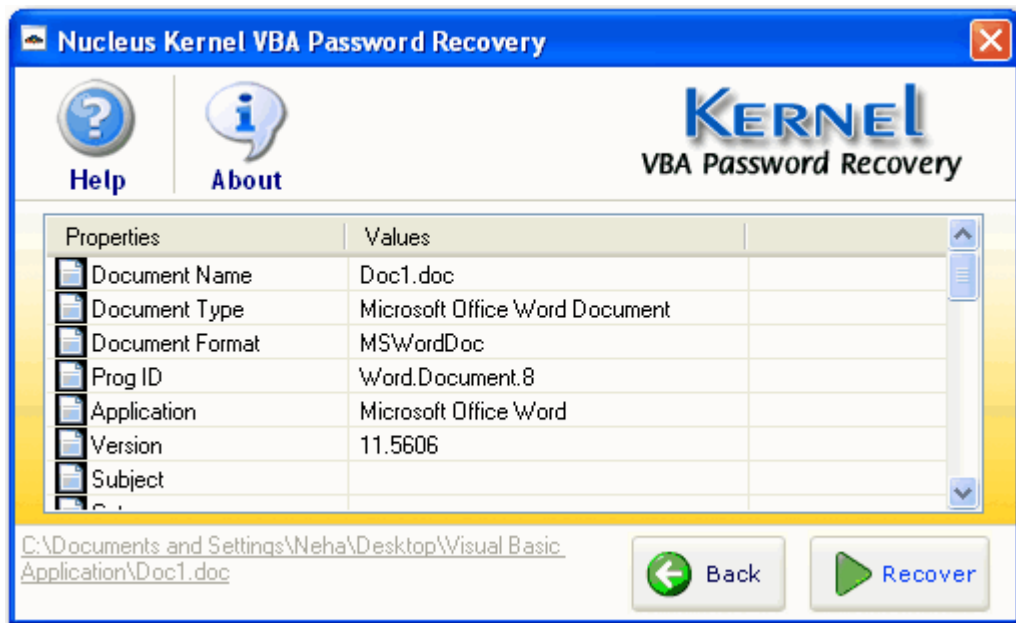


Figure 4.4: Window showing the properties of selected file

5. Click **Copy to Clipboard** to copy the password to the clipboard which reduces the typing errors while manually writing password.



Figure 4.5: Password Recovered

## 5. Full Version

---

Although you can use Kernel for VBA Password Recovery evaluation version for free and experience the capabilities of the software, there are certain features that are not available in the evaluation version.

### 5.1 Requirement of Full Version

---

By using the evaluation version of Kernel for VBA Password Recovery, you will be shown only the first two characters of the password. **Full** Version is required to extract the complete password.

### 5.2 Purchasing Full Version

---

You can buy the full version of Kernel for VBA Password Recovery from any one of our authorized resellers – Element5, Asknet and 2CO.

As soon the purchase transaction with our resellers gets completed, our sales team will send you an email comprising the URL to download the full version of Kernel for VBA Password Recovery and activation details of the software.

## 6. Support

---

We have an extensive and efficient support system in place to assist our customers with all issues related to using Kernel for VBA Password Recovery. The software comes with an embedded help manual that can be accessed by clicking **Help→Software Help** in the tool-bar. You can also press the F1 key on the keyboard of your computer to access the embedded help of Kernel for VBA Password Recovery.

You can access the online help for Kernel for VBA Password Recovery at <http://www.nucleustechnologies.com/Online-Helps.html>

We also have live support wherein you can chat with our software experts at <http://www.nucleustechnologies.com/Support.html>

To talk on phone with our software experts call:

**Help line:**

+91-9818725861

1-866-348-7872 (Toll Free for USA/ CANADA)

You can also email us about your queries at;

[sales@nucleustechnologies.com](mailto:sales@nucleustechnologies.com) for Sales

[support@nucleustechnologies.com](mailto:support@nucleustechnologies.com) for Support

[contact@nucleustechnologies.com](mailto:contact@nucleustechnologies.com) for General Queries

# 7. Troubleshooting

---

This section deals with your generic and specific queries pertaining to using Kernel for VBA Password Recovery.

## 7.1 Common Issues

---

Why does Kernel for VBA Password Recovery have limitations in evaluation copy?

The free evaluation version of Kernel for VBA Password Recovery is intended to enable you to experience the capabilities of the software. You will need to buy the software to get the complete password.

## 7.2 Frequently Asked Questions

---

**How to Buy Kernel for VBA Password Recovery?**

You can buy Kernel for VBA Password Recovery online at <http://www.nucleustechnologies.com/buy-vba-password-recovery.php>

**I have lost my full version for Kernel for VBA Password Recovery. Can you help me?**

Please email us at [sales@nucleustechnologies.com](mailto:sales@nucleustechnologies.com). Please include your name, address, email address, and order confirmation number (if you have it). We will be happy to help you.

## 8. Legal Notices

---

This section comprises the legal specification about Kernel for VBA Password Recovery and the company NUCLEUS DATA RECOVERY.COM PRIVATE LIMITED

### 8.1 Copyright

---

NUCLEUS DATA RECOVERY.COM PRIVATE LIMITED, Nucleus Kernel accompanied user manual and documentation are copyright of NUCLEUS DATA RECOVERY.COM PRIVATE LIMITED, with all rights reserved. Under the copyright laws, this user manual cannot be reproduced in any form without the prior written permission of NUCLEUS DATA RECOVERY.COM PRIVATE LIMITED. No Patent Liability is assumed, however, with respect to the use of the information contained herein.

© NUCLEUS DATA RECOVERY.COM PRIVATE LIMITED. All rights reserved.

### 8.2 Trademark

---

Nucleus Kernel ® is a copyright work of NUCLEUS DATA RECOVERY.COM PRIVATE LIMITED

Windows 95®, Windows 98®, Windows ME®, Windows NT®, Windows 2000 Server®, Windows 2000 Advanced Server®, Windows 2003 Server®, Windows XP®, Windows Vista, MS-DOS and MS Office are registered trademarks of Microsoft Corporation.

All other brand and product names are trademarks or registered trademarks of their respective companies.

### 8.3 Disclaimer

---

The Information contained in this manual, including but not limited to any product specifications, is subject to change without notice. NUCLEUS DATA RECOVERY.COM PRIVATE LIMITED provides no warranty with regard to this manual or any other information contained here in and here by expressly disclaims any implied warranties of merchantability or fitness for any particular purpose with regard to any of the foregoing NUCLEUS DATA RECOVERY.COM PRIVATE LIMITED assumes no liability for any damages incurred directly or indirectly from any technical or typographical errors or omissions contained here in or for discrepancies between the product and the manual. In no event shall NUCLEUS DATA RECOVERY.COM PRIVATE LIMITED, be liable for any incidental, consequential special, or exemplary damages, whether based on tort, contract or otherwise, arising out of or in connection with this manual or any other information contained here in or the use there of.

### 8.4 License Agreement

---

Kernel for VBA Password Recovery is Copyright © by NUCLEUS DATA RECOVERY.COM PRIVATE LIMITED

#### Your Agreement to this License

You should carefully read the following terms and conditions before using, installing or distributing this software, unless you have a different license agreement signed by NUCLEUS DATA RECOVERY.COM PRIVATE LIMITED. The terms and conditions of this License describe the permitted use and users of

each Licensed Copy of Kernel for VBA Password Recovery. For purposes of this License, if you have a valid license, you have the right to use a single Licensed Copy of Nucleus Kernel.

### **Scope of License**

Each Licensed Copy of Kernel for VBA Password Recovery may either be used by a single person or used non-simultaneously by multiple people who use the software personally installed on a single workstation. All rights of any kind in Nucleus Kernel, which are not expressly granted in this License, are entirely and exclusively reserved to and by NUCLEUS DATA RECOVERY.COM PRIVATE LIMITED. You may not rent, lease, modify, translate, reverse engineer, decompile, disassemble, or create derivative works based on, Nucleus Kernel, nor permit anyone else to do so. You may not make access to Nucleus Kernel available to others in connection with a service bureau, application service provider, or similar business, nor permit anyone else to do so.

### **Warranty Disclaimers and Liability Limitations**

Kernel for VBA Password Recovery, and any and all accompanying software, files, data and materials, are distributed and provided AS IS and with no warranties of any kind, whether expressed or implied. In particular, there is no warranty for the quality of data recovered. You acknowledge that good data processing procedure dictates that any program, including Nucleus Kernel, must be thoroughly tested with non-critical data before there is any reliance on it, and you hereby assume the entire risk of all use of the copies of Nucleus Kernel covered by this License. This disclaimer of warranty constitutes an essential part of this License. In addition, in no event does NUCLEUS DATA RECOVERY.COM PRIVATE LIMITED authorize you or anyone else to use Kernel for VBA Password Recovery in applications or systems where Kernel for VBA Password Recovery failure to perform can reasonably be expected to result in a significant physical injury, or in loss of life. Any such use is entirely at your own risk, and you agree to hold NUCLEUS DATA RECOVERY.COM PRIVATE LIMITED harmless from any and all claims or losses relating to such unauthorized use.

### **General**

This License is the complete statement of the agreement between the parties on the subject matter, and merges and supersedes all other or prior understandings, purchase orders, agreements and arrangements. This License shall be governed by the laws of the State of Delhi. Exclusive jurisdiction and venue for all matters relating to this License shall be in courts and for a located in the State of Delhi, and you consent to such jurisdiction and venue. There are no third party beneficiaries of any promises, obligations or representations made by NUCLEUS DATA RECOVERY.COM PRIVATE LIMITED herein.

Any waiver by NUCLEUS DATA RECOVERY.COM PRIVATE LIMITED of any violation of this License by you shall not constitute, nor contribute to, a waiver by NUCLEUS DATA RECOVERY.COM PRIVATE LIMITED of any other or future violation of the same provision, or any other provision, of this License.