

Figure 5.3: Saving Process

6. Recovered emails can be now viewed in Outlook Express under selected main folder.

5.2 Save as EML

Follow these steps to save the recovered email items in EML file format.

1. Select **Save as EML** option from the Saving Options window.

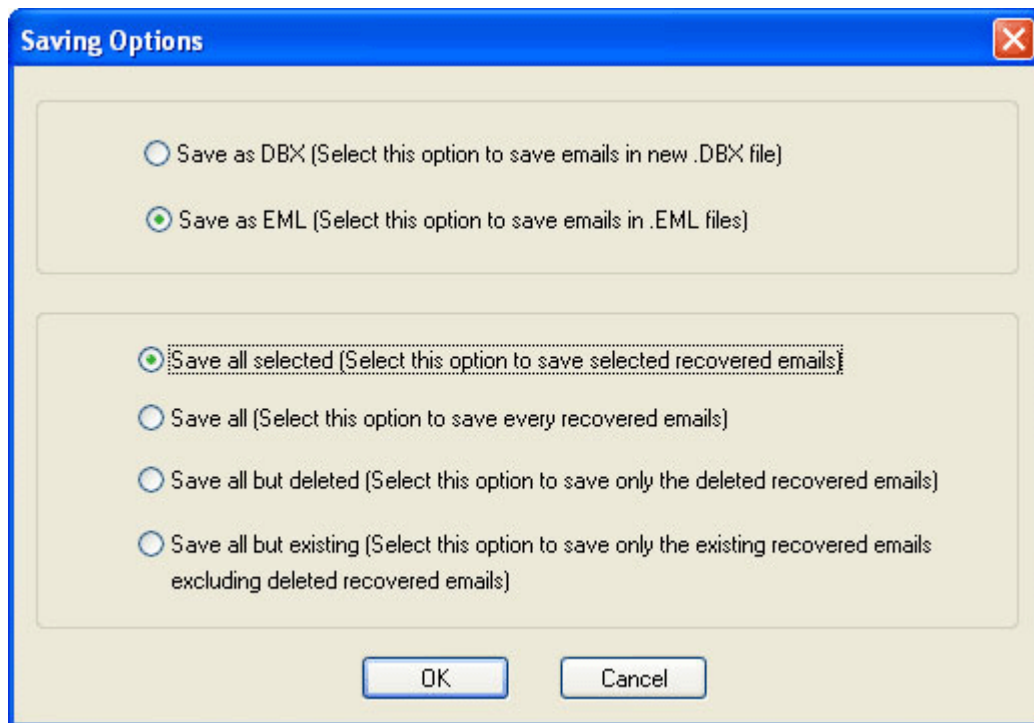


Figure 5.4 Saving Option- Save as EML

2. Select the other saving options as per your need: **Save all selected**, **Save all**, **save all but deleted**, **Save all but existing**.
3. Click **OK** to continue with the process.
4. Software displays **Browse for Folder** window. Here you need to select a location, where the .EML files will get saved and click **OK** to continue with saving process.



Figure 5.5: “Browse for Folder” Window

5. Software starts the saving process. As soon as Kernel for Outlook Express finishes the repairing and saving process, it displays the message “**Saving process is complete**”.

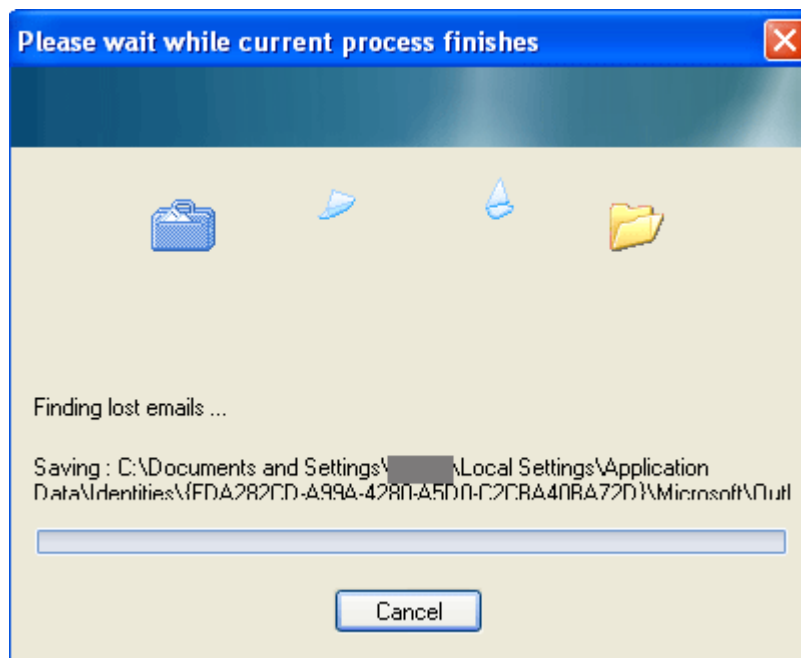


Figure 5.6: Saving Process

6. Once emails are saved, they can be viewed from the saved location.

6. Full Version

Evaluation version is provided to get acquainted with the features and functions of Kernel for Outlook Express. Although you can use Kernel for Outlook Express evaluation version for free and experience the capabilities of the software, there are certain limitations in free evaluation version.

6.1 Requirement of Full Version

With free evaluation version of Kernel for Outlook Express, you can repair corrupt dbx files; however you cannot save the entire recovered emails. Evaluation version allows saving of only first 10 emails from each dbx files which have been recovered by the software.

You will need to buy the full version of the software to save the entire recovered emails.

6.2 Purchasing Full Version

You can buy the full version of Kernel for Outlook Express from any one of our authorized resellers – Element5, Asknet and 2CO.

As soon as the purchase transaction with our resellers gets completed, our sales team will send you an email comprising the URL to download the full version of Kernel for Outlook Express and activation details of the software.

7. Support

We have an extensive and efficient support system in place to assist our customers with all issues related to using Kernel for Outlook Express. The software comes with an embedded help manual that can be accessed by clicking **Help → Software Help** in the menu-bar. You can also press the F1 key on the keyboard of your computer to access the embedded help of Kernel for Outlook Express.

You can access the online help for Kernel for Outlook Express at <https://www.nucleustechnologies.com/Online-Helps.html>

View Animated Working Demo of the software at https://www.nucleustechnologies.com/Animated_Demo_Mails.html

We also have live support wherein you can chat with our software experts at <https://www.nucleustechnologies.com/supportcenter/>

To talk on phone with our software experts call:

Help line:

+91-9818725861

1-866-348-7872 (Toll Free for USA/CANADA)

You can also email us about your queries at;

sales@nucleustechnologies.com for Sales

support@nucleustechnologies.com for Support

contact@nucleustechnologies.com for General Queries

8. Troubleshooting

This section deals with your generic and specific queries pertaining to using Kernel for Outlook Express.

8.1 Common Issues

Why does Kernel for Outlook Express have limitations in evaluation copy?

The free evaluation version of Kernel for Outlook Express enables its users to get acquainted with the features and functions of the software before purchasing the full version of the software. Free demo version saves only 10 emails from each folder. To save the entire recovered emails, full version needs to be purchased.

8.2 Frequently Asked Questions

How to Buy Kernel for Outlook Express?

You can buy Kernel for Outlook Express online at <https://www.nucleustechnologies.com/Buy-Outlook-Express-Mails-Recovery-Software.php>

I have lost my full version for Kernel for Outlook Express. Can you help me?

Please email us at sales@nucleustechnologies.com. Please include your name, address, email address, and order confirmation number (if you have it). We will be happy to help you.

How to identify the deleted emails which are recovered by the software?

Recovered deleted emails are displayed in **RED** color for identification.

What are the supported versions of Outlook Express?

Kernel for Outlook Express supports repairing of dbx files created with Outlook Express 5.0 and above.

How much time would be required to repair the corrupt dbx files?

Repair and recovery time depends on the intensity of the corruption caused to your dbx files.

Evaluation version does not save all the recovered emails. With free evaluation version, how can I know that the software is powerful enough to provide complete and exact recovery of email and its associated properties?

Kernel for Outlook Express is equipped with a view preview before saving feature. With this feature, you can analyze the correctness and completeness of your emails and its associated properties before saving. In this way, you can check the efficiency of the software before buying its full version.

9. Legal Notices

This section comprises the legal specification about Kernel for Outlook Express and the company NUCLEUS DATA RECOVERY.COM PRIVATE LIMITED

9.1 Copyright

NUCLEUS DATA RECOVERY.COM PRIVATE LIMITED, Kernel accompanied user manual and documentation are copyright of NUCLEUS DATA RECOVERY.COM PRIVATE LIMITED, with all rights reserved. Under the copyright laws, this user manual cannot be reproduced in any form without the prior written permission of NUCLEUS DATA RECOVERY.COM PRIVATE LIMITED. No Patent Liability is assumed, however, with respect to the use of the information contained herein.

© NUCLEUS DATA RECOVERY.COM PRIVATE LIMITED. All rights reserved.

9.2 Trademark

Nucleus Kernel ® is a copyright work of Nucleus Data Recovery.Com Private Limited

Windows 95®, Windows 98®, Windows ME®, Windows NT®, Windows 2000 Server®, Windows 2000 Advanced Server®, Windows 2003 Server®, Windows XP®, Windows Vista®, MS-DOS and Outlook Express are registered trademarks of Microsoft Corporation.

All other brand and product names are trademarks or registered trademarks of their respective companies.

9.3 Disclaimer

The Information contained in this manual, including but not limited to any product specifications, is subject to change without notice. NUCLEUS DATA RECOVERY.COM PRIVATE LIMITED provides no warranty with regard to this manual or any other information contained herein and here by expressly disclaims any implied warranties of merchantability or fitness for any particular purpose with regard to any of the foregoing NUCLEUS DATA RECOVERY.COM PRIVATE LIMITED assumes no liability for any damages incurred directly or indirectly from any technical or typographical errors or omissions contained herein or for discrepancies between the product and the manual. In no event shall NUCLEUS DATA RECOVERY.COM PRIVATE LIMITED, be liable for any incidental, consequential special, or exemplary damages, whether based on tort, contract or otherwise, arising out of or in connection with this manual or any other information contained herein or the use there of.

9.4 License Agreement

Kernel for Outlook Express Copyright © by NUCLEUS DATA RECOVERY.COM PRIVATE LIMITED

Your Agreement to this License

You should carefully read the following terms and conditions before using, installing or distributing this software, unless you have a different license agreement signed by NUCLEUS DATA RECOVERY.COM PRIVATE LIMITED. The terms and conditions of this License describe the permitted use and users of each Licensed Copy of Kernel for Outlook Express. For purposes of this License, if you have a valid license, you have the right to use a single Licensed Copy of Nucleus Kernel.

Scope of License

Each Licensed Copy of Kernel for Outlook Express may either be used by a single person or used non-simultaneously by multiple people who use the software personally installed on a single workstation. All rights of any kind in Nucleus Kernel, which are not expressly granted in this License, are entirely and exclusively reserved to and by NUCLEUS DATA RECOVERY.COM PRIVATE LIMITED. You may not rent, lease, modify, translate, reverse engineer, decompile, disassemble, or create derivative works based on, Nucleus Kernel, nor permit anyone else to do so. You may not make access to Nucleus Kernel available to others in connection with a service bureau, application service provider, or similar business, nor permit anyone else to do so.

Warranty Disclaimers and Liability Limitations

Kernel for Outlook Express, and any and all accompanying software, files, data and materials, are distributed and provided AS IS and with no warranties of any kind, whether expressed or implied. In particular, there is no warranty for the quality of data recovered. You acknowledge that good data processing procedure dictates that any program, including Nucleus Kernel, must be thoroughly tested with non-critical data before there is any reliance on it, and you hereby assume the entire risk of all use of the copies of Nucleus Kernel covered by this License. This disclaimer of warranty constitutes an essential part of this License. In addition, in no event does NUCLEUS DATA RECOVERY.COM PRIVATE LIMITED authorize you or anyone else to use Kernel for Outlook Express in applications or systems where Kernel for Outlook Express failure to perform can reasonably be expected to result in a significant physical injury, or in loss of life. Any such use is entirely at your own risk, and you agree to hold NUCLEUS DATA RECOVERY.COM PRIVATE LIMITED harmless from any and all claims or losses relating to such unauthorized use.

General

This License is the complete statement of the agreement between the parties on the subject matter, and merges and supersedes all other or prior understandings, purchase orders, agreements and arrangements. This License shall be governed by the laws of the State of Delhi. Exclusive jurisdiction and venue for all matters relating to this License shall be in courts and for a located in the State of Delhi, and you consent to such jurisdiction and venue. There are no third party beneficiaries of any promises, obligations or representations made by NUCLEUS DATA RECOVERY.COM PRIVATE LIMITED herein.

Any waiver by NUCLEUS DATA RECOVERY.COM PRIVATE LIMITED of any violation of this License by you shall not constitute, nor contribute to, a waiver by NUCLEUS DATA RECOVERY.COM PRIVATE LIMITED of any other or future violation of the same provision, or any other provision, of this License.