



Kernel for PowerPoint

“Get Back Your Important PowerPoint
Presentation Files”

PRODUCT GUIDE

Table of Contents

1.1	Using this Manual	4
1.1.1	List of Abbreviations	4
1.2	Kernel for Power Point	5
1.4	Who Should Use this Software?	6
2.1	Installation Pre-requisites.....	7
2.1.1	Hardware Requirements:.....	7
2.1.2	Software Requirements:	7
2.1.2.1	Operating System Requirements.....	7
2.1.2.2	MS Power Point Version Supported	8
2.2	Downloading Kernel for Power Point for the First Time.....	8
2.3	Install Kernel for Power Point	8
2.4	Start Kernel for Power Point	9
2.5	Uninstall Kernel for Power Point.....	9
3.1	Menu-bar	10
3.1.1	File Menu	10
3.1.2	Tools Menu	11
3.1.3	Help Menu.....	11
3.2	Tool-bar.....	12
3.3	Buttons Used.....	13
5.1	Requirement of Full Version.....	20
5.2	Purchasing Full Version.....	20
7.1	Common Issues	22
7.2	Frequently Asked Questions	22
8.1	Copyright	23
8.2	Trademark	23
8.3	Disclaimer	23
8.4	License Agreement	23

Table of Figures

Figure 3.1.1 File Menu.....	10
Figure 3.1.2 Tools Menu.....	11
Figure 3.1.3 Help Menu.....	11
Figure 3.3.1 Main Screen.....	14
Figure 3.3.2 Recover PPT.....	15
Figure 3.3.3 Browse for Folder.....	15
Figure 3.3.4 Select Recovery Mode.....	16
Figure 3.3.5 Recovery Progress.....	16
Figure 3.3.6 Select Master Slide.....	17
Figure 3.3.7 File Display - Integrated Mode.....	18
Figure 3.3.8 File Display - Standard Mode.....	19
Figure 3.3.9 Saving Confirmation.....	19

1. About Kernel for Power Point

Welcome to the user manual for Kernel for PowerPoint, the most effective and convenient .ppt, .pot and .pps file repair tool available that repairs corrupt MS PowerPoint presentation files. This user manual comprises step by step guidelines on using Kernel for PowerPoint.

1.1 Using this Manual

This user manual is intended to guide users on using Kernel for PowerPoint. We suggest that first time users should read this user manual completely and carefully before proceeding to use the software. However, if you are an experienced user, you can use the table of contents to find out information pertaining to the tasks that you need to perform by using Kernel for PowerPoint. You can use the table of contents to navigate through different sections of this user manual. The table of contents lists all the sections that are contained in this user manual in chronological order. The user manual comprises the following sections:

- Introduction
- Getting Started
- Software Interface
- Repairing .PPT files
- Full Version
- Support
- Troubleshooting
- Legal Notices

1.1.1 List of Abbreviations

Certain abbreviations have been used throughout this manual. For clear understanding of the contents of this user manual, please go through the list of abbreviations, mentioned below, before reading the manual.

PPT: PowerPoint

MS: Microsoft

RAM: Random Access Memory

MB: Mega-Byte

1.2 Kernel for Power Point

Kernel for PowerPoint is file repair and data recovery software for MS PowerPoint presentation files. This software repairs MS PowerPoint files that become inaccessible due to unexpected system shutdown, power failure, virus attacks, media errors, bad sectors in the disk, software failure etc. Kernel for PowerPoint provides effective recovery of the data which exists in the corrupt .ppt files. To do so, Kernel for PowerPoint is incorporated with **Standard mode** of recovery which is built with powerful recovery engine to repair the errors that occurs due to major corruption. This mode effectively recovers the ppt file of big size with its content but in some cases, it recovers the images or objects in a raw format which may needs to be organized again in the file. Other recovery mode includes **Integrated mode**, which is fast and beneficial for the recovery of minor corruptions caused to your PPT file. You might be familiar with the following error messages if you have encountered MS PowerPoint .ppt file corruption before:
Unable to read files.

- This file is not in a recognizable format
- '?????.ppt cannot be accessed. The file may be read-only, or you may be trying to access a read-only location. Or, the server on which the presentation is stored on may not be responding.
- POWERPOINT.exe has generated errors and will be closed by Windows. You will need to restart the program. An error log is being created.

Kernel for PowerPoint quickly and effectively resolves the above mentioned errors by repairing corrupt PowerPoint presentation files, keeping the complete document format intact. It restores deleted master slides, images, objects, animations, tables, sound file, media player files, basic shapes, word art, banners, callouts and all other components of the corrupt presentation file.

1.3 Salient Features

Salient features of Kernel for PowerPoint include:

- Efficient embedded repair algorithms to quickly repair even heavy files
- Support for almost all versions of MS PowerPoint
- User friendly graphical user interface
- No technical skills are required
- Live Preview of the recovered items of the repaired file before saving to new ppt files

- Supports .ppt,.pps.pot PowerPoint presentation file formats
- Equipped with two recovery modes: Standard and Integrated
- Recovers data from password protected presentations if password is known to the user
- Free demo to test the capabilities of the tool before purchasing it

1.4 Who Should Use this Software?

The capability of Kernel for PowerPoint to repair large sized .ppt files makes it appropriate for use by home users, college users, corporate users or any other user who keep their important presentation stored in MS PowerPoint presentation files. The software is also suitable for other MS PowerPoint users who have lost their important presentation stored in password protected .ppt files due to .ppt file corruption. This corruption could have been caused due to virus attacks, improper system shutdown, installation of unsupported software, etc

2. Getting Started

Now that you have understood the features and potential of Kernel for PowerPoint, you are ready to get hands on experience of the software. To start repairing .ppt files, you will first need to download and install this software. It is strongly recommended that before installing Kernel for PowerPoint, you should go through the installation pre-requisites for the software to ensure that your computer is appropriately configured to run the software.


2.1 Installation Pre-requisites

The various pre-requisites for installing and running Kernel for PowerPoint can be broadly classified into two major categories – Hardware requirements and Software requirements.

2.1.1 Hardware Requirements:

The hardware requirements for installing the software are as follows:

- Pentium Class Processor
- Minimum 64MB RAM (128 MB recommended)
- 10MB for Software installation
- Disk Space - Enough space to store the repaired files

 You should have at-least 10 MB of free disk space if you want to repair and save a 10 MB.ppt file.

2.1.2 Software Requirements:

The software requirements for installing the software can further be grouped into two categories – Operating system requirements and MS PowerPoint version requirements. The requirements are as follows:

2.1.2.1 Operating System Requirements

Supported operating systems:

- Windows 8
- Windows 7
- Windows Vista

- Windows NT
- Windows XP
- Windows 2003
- Windows 2000

2.1.2.2 MS Power Point Version Supported


Supported PowerPoint versions:

- PowerPoint 2013
- Power Point 2010
- Power Point 2007
- PowerPoint 2003
- PowerPoint 2002
- PowerPoint 2000
- PowerPoint 97

2.2 Downloading Kernel for Power Point for the First Time

After checking your computer with the prescribed system requirements for Kernel for PowerPoint, you can download and install the software on your computer. You can buy the full version of the software from any one of our authorized resellers– Element5, Asknet and 2CO. If you want to try using Kernel for PowerPoint before buying it, you can download the evaluation version from the following link:

<https://www.nucleustechnologies.com/Download-Powerpoint-Presentation-Repair-Software.php>

 You can repair .ppt, .pps and .pot files saved on your system by using the evaluation version of Kernel for PowerPoint; however, the repaired file will display the recovered components of the repaired file but it does not allow to save the recovered component until you purchase the full version of the software.

2.3 Install Kernel for Power Point

After downloading the installer file for Kernel for PowerPoint, you can install the software by running the file. To install Kernel for PowerPoint:

1. Double-click the Kernel for PowerPoint installer. Follow the on-screen instructions.

The **Setup Installation Complete** screen will be displayed.

2. . Click **Finish** to launch the software.

2.4 Start Kernel for Power Point

To start Kernel for PowerPoint:

Click the **Start** → **All Programs** → **Kernel for PowerPoint** Alternatively, you can launch Kernel for PowerPoint by double-clicking the shortcut icon available on the Desktop and Quick Launch icon.


2.5 Uninstall Kernel for Power Point

You may need to uninstall and re-install Kernel for PowerPoint. To uninstall Kernel for PowerPoint:

1. Click the **Start** → **All Programs** → **Kernel for PowerPoint** → **Uninstall Kernel for PowerPoint**

A warning message will be displayed.

2. Click **Yes** to uninstall Kernel for PowerPoint.

 Before proceeding to uninstall Kernel for PowerPoint, you must ensure that the software is not running.

Uninstall from Control Panel

You can alternatively uninstall Kernel for PowerPoint from the **Control Panel** by performing the following steps:

1. Click the **Start Menu** → **Control Panel** and then double click the **Add or Remove Programs** icon.
2. Select **Kernel for PowerPoint** and click **Remove**.

A warning message will be displayed.

3. Click **Yes** to uninstall Kernel for PowerPoint.

3. Software Interface

Now that Kernel for PowerPoint has been installed on your computer, you can start using the software after getting acquainted with the software interface.

3.1 Menu-bar

The menu-bar of Kernel for PowerPoint comprises three main menus – File, Tools, and Help.

3.1.1 File Menu

The **File** menu comprises three menu items.



Figure 3.1.1 File Menu

Menu items in the **File** menu:

Field Name	Field Description
Add File	Select to browse and list corrupt .ppt, .pps, .pot files stored on your hard disk
Recover	Select to start the process of repairing
Exit	Select to close the software

3.1.2 Tools Menu

The **Tools** menu has one menu item:



Figure 3.1.2 Tools Menu

Menu Items in the **Tools** menu:

Field Name	Field Description
Settings	Select to specify the name of the folder(name prefix) which contains the repaired files

3.1.3 Help Menu

The **Help** menu comprises two menu items.

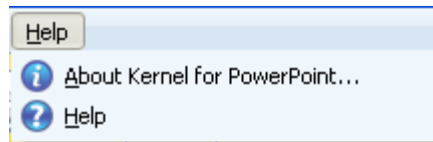







Figure 3.1.3 Help Menu

Menu items in the Help menu:

Field Name	Field Description
About Kernel for Power Point	Select to view version-related and support information of Kernel for PowerPoint
Help	Select to view help information pertaining to performing various tasks using Kernel for PowerPoint



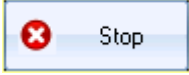
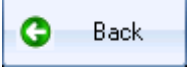
3.2 Tool-bar

The tool-bar in Kernel for PowerPoint is displayed below the menu-bar. The tool-bar provides a convenient and user-friendly method to perform certain actions that can also be performed by using the menu-bar. Read the information in the table below to find out about the tool-bar buttons:

Button	Button Name	Button Description
 Add File	Add File	Select to browse and list corrupt .ppt files stored on your hard disk
 Recover	Recover	Select to start with the repair process
 Settings	Settings	Select to specify the name of the folder (name prefix) which will contain the repaired presentation files
 Help	Help	Select to view help files of the software
 About	About	Select to view the version and other information related to the software

3.3 Buttons Used

There are various buttons used in the software to make the task of recovering PowerPoint data easy and speedy. Following table lists the buttons used in the software:

Button	Button Description
	Click to browse and select the .ppt(.pps,.pot) file that needs to be repaired
	Click to start with the repairing process
	Click to stop the saving process in between
	Click to go back in the ongoing process

4. Repairing PPT Files

Now that you have complete familiarity of the user interface of Kernel for PowerPoint, you are ready to repair .ppt files. To repair .PPT files:

1. Launch Kernel for PowerPoint. Select the corrupt Power Point presentation with the help of the the **Browse** button.

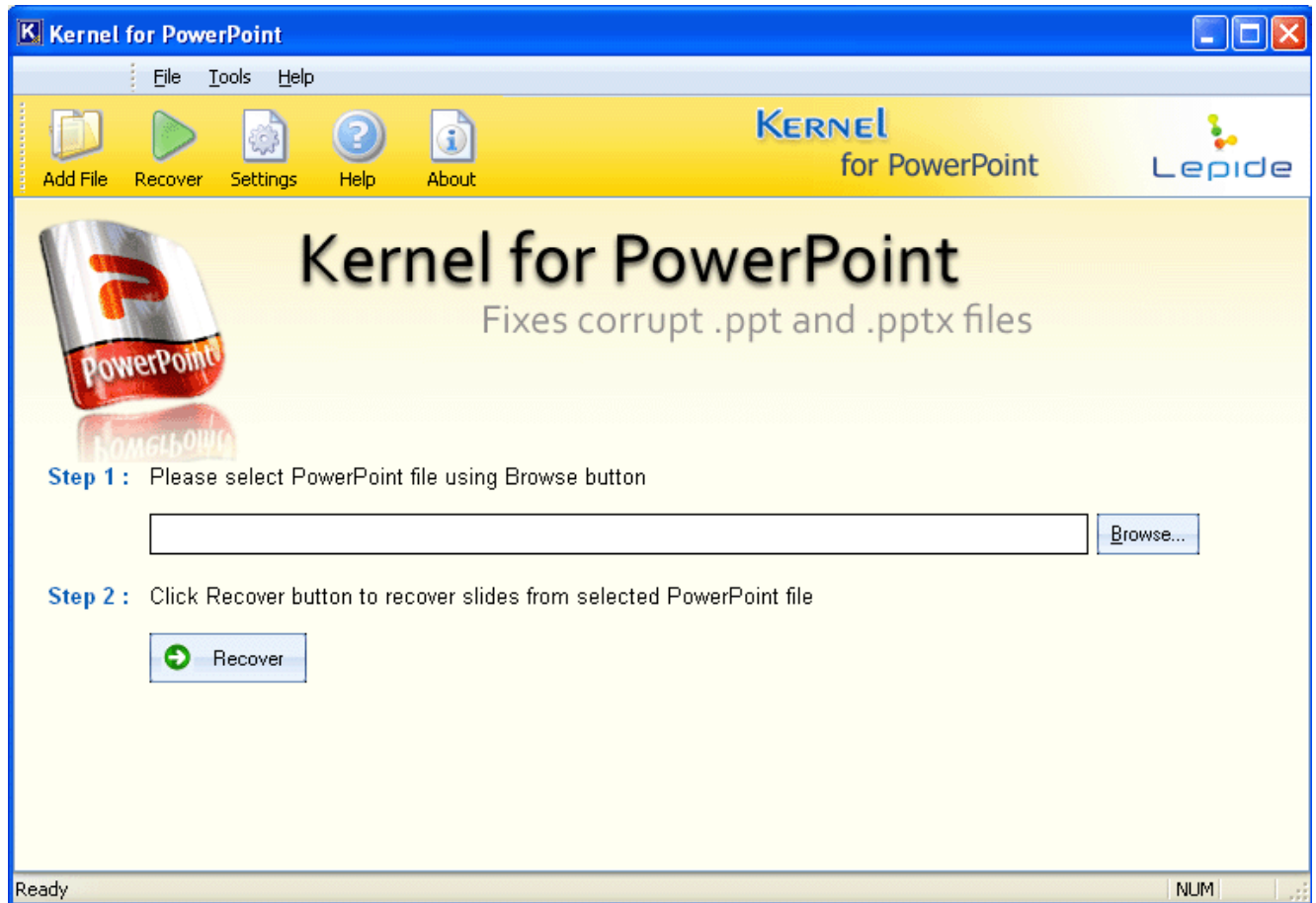


Figure 3.3.1 Main Screen

2. Click the **Recover** button, when the selected file is displayed in the dialogue box.

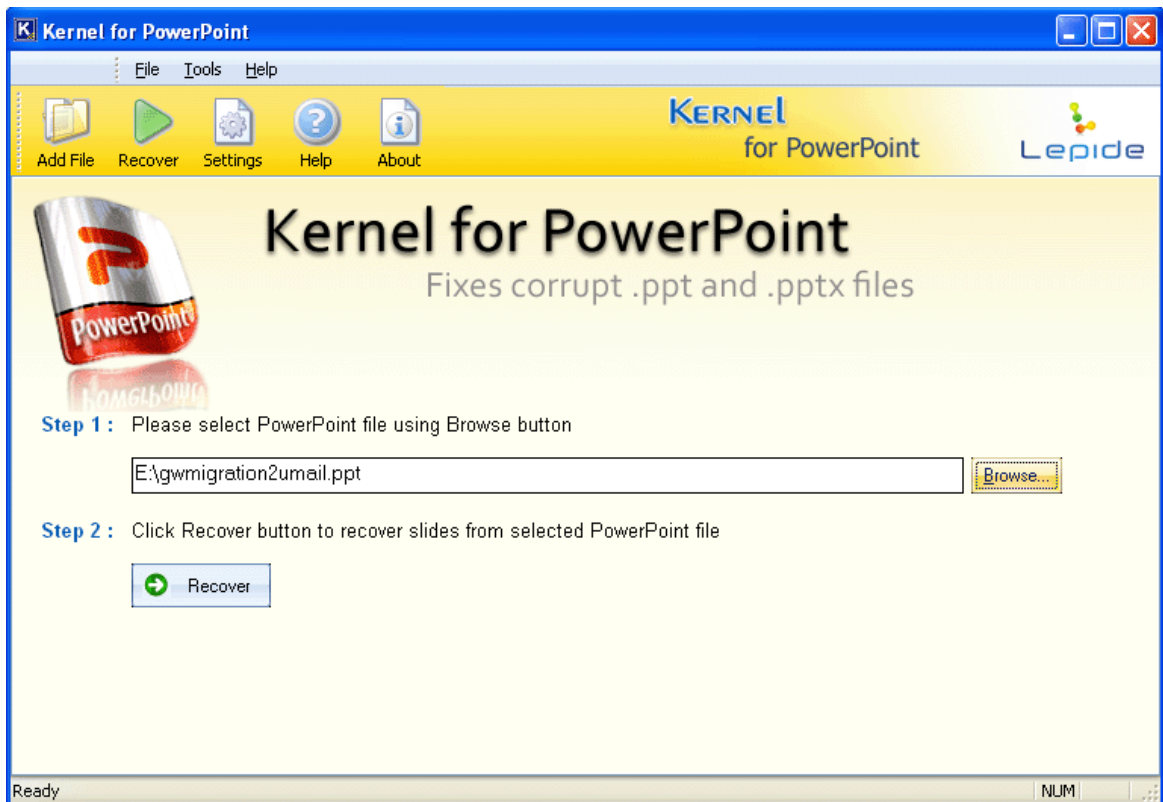


Figure 3.3.2 Recover PPT

3. Browse to your desired location and click **OK**.

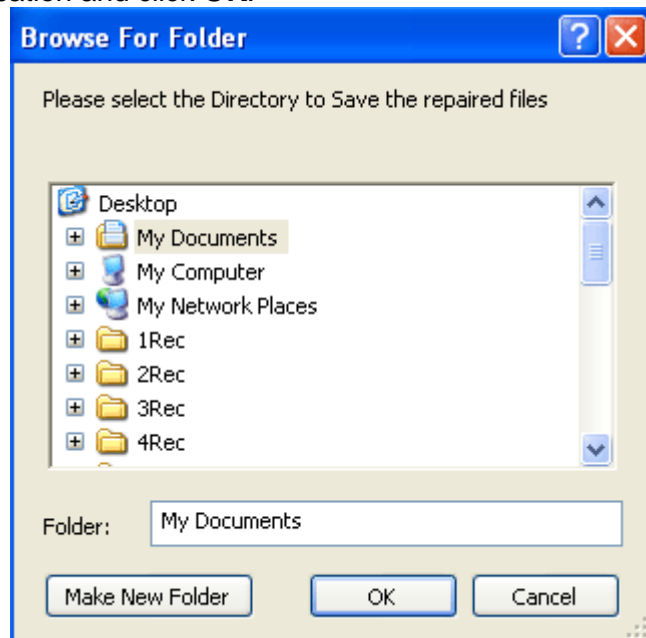


Figure 3.3.3 Browse for Folder

4. Kernel for PowerPoint displays the mode of recovery to repair the corrupt .ppt files: **Standard mode** or **Integrated mode**. Select the appropriate mode and click **OK** to start with the repair process.

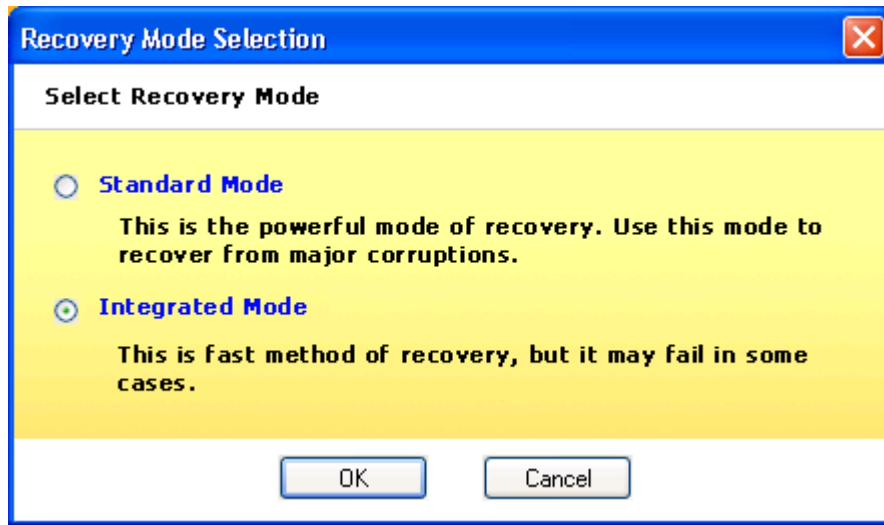


Figure 3.3.4 Select Recovery Mode

5. Wait while recovery is in progress.

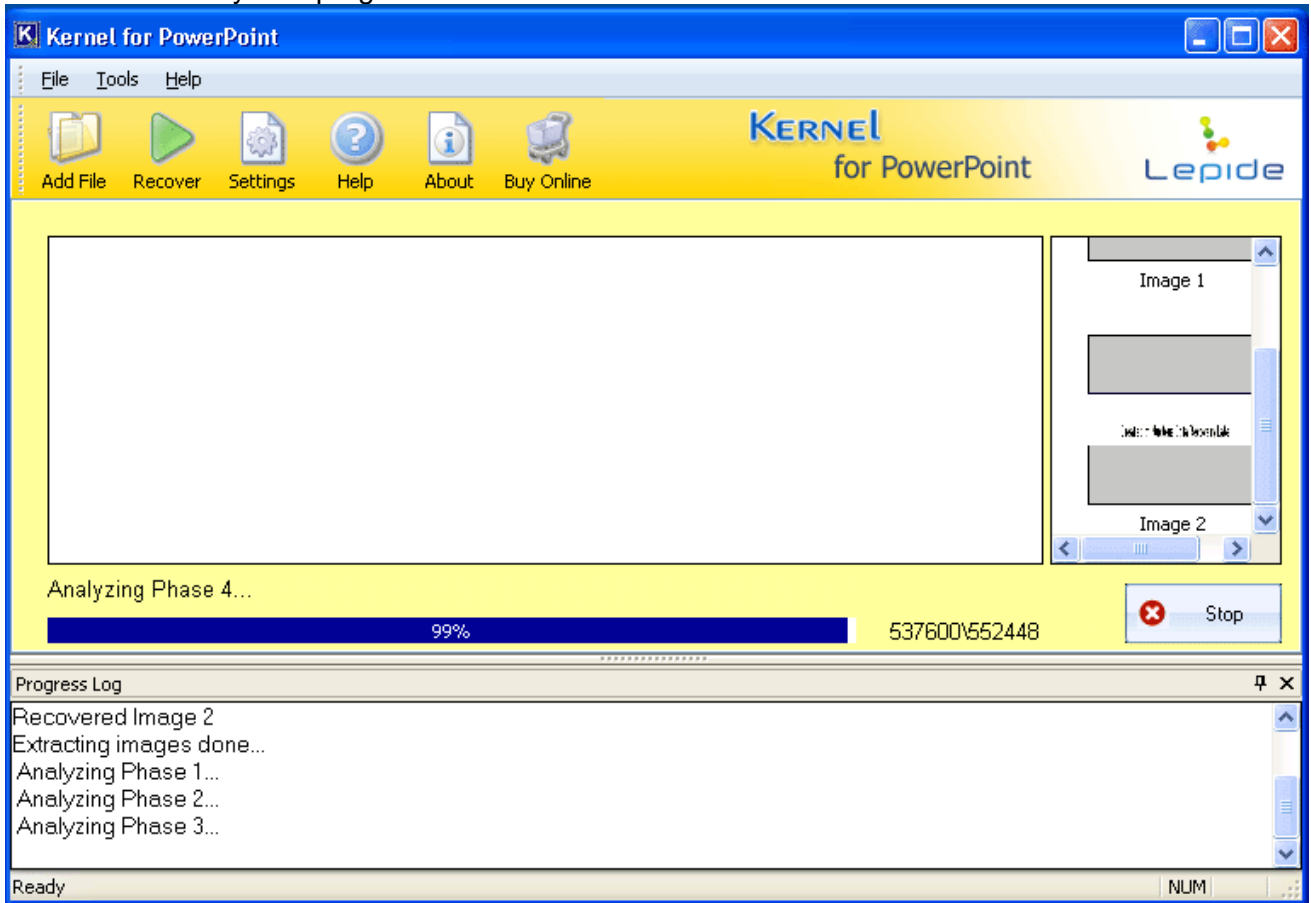


Figure 3.3.5 Recovery Progress

 You can stop the saving of repaired files with the help of **Stop** button

Note: In Standard Mode, you will be prompted to choose a master slide. Select the Master Slide of which the content is to be recovered and click **OK**.

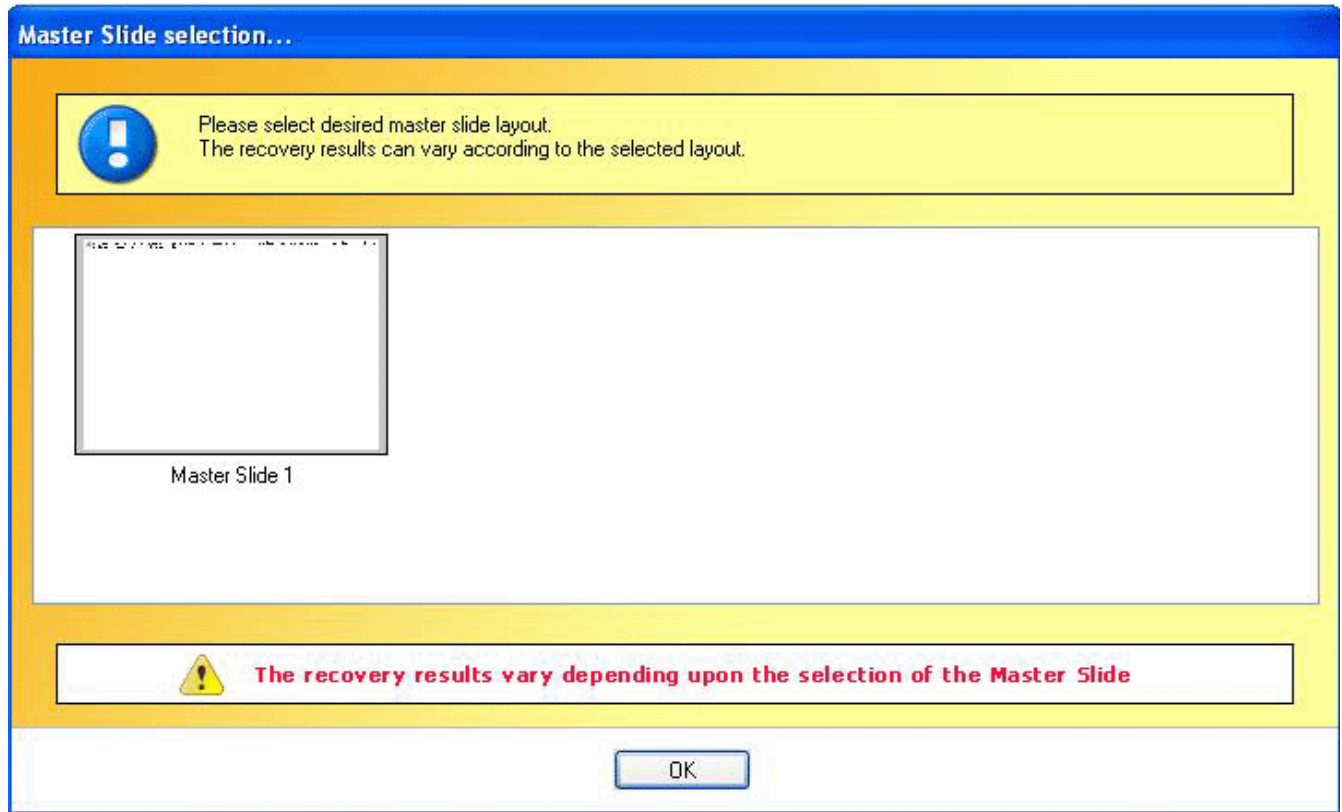


Figure 3.3.6 Select Master Slide

6. The **Progress Log** displays the recovery procedure and the number of slides which gets recovered.

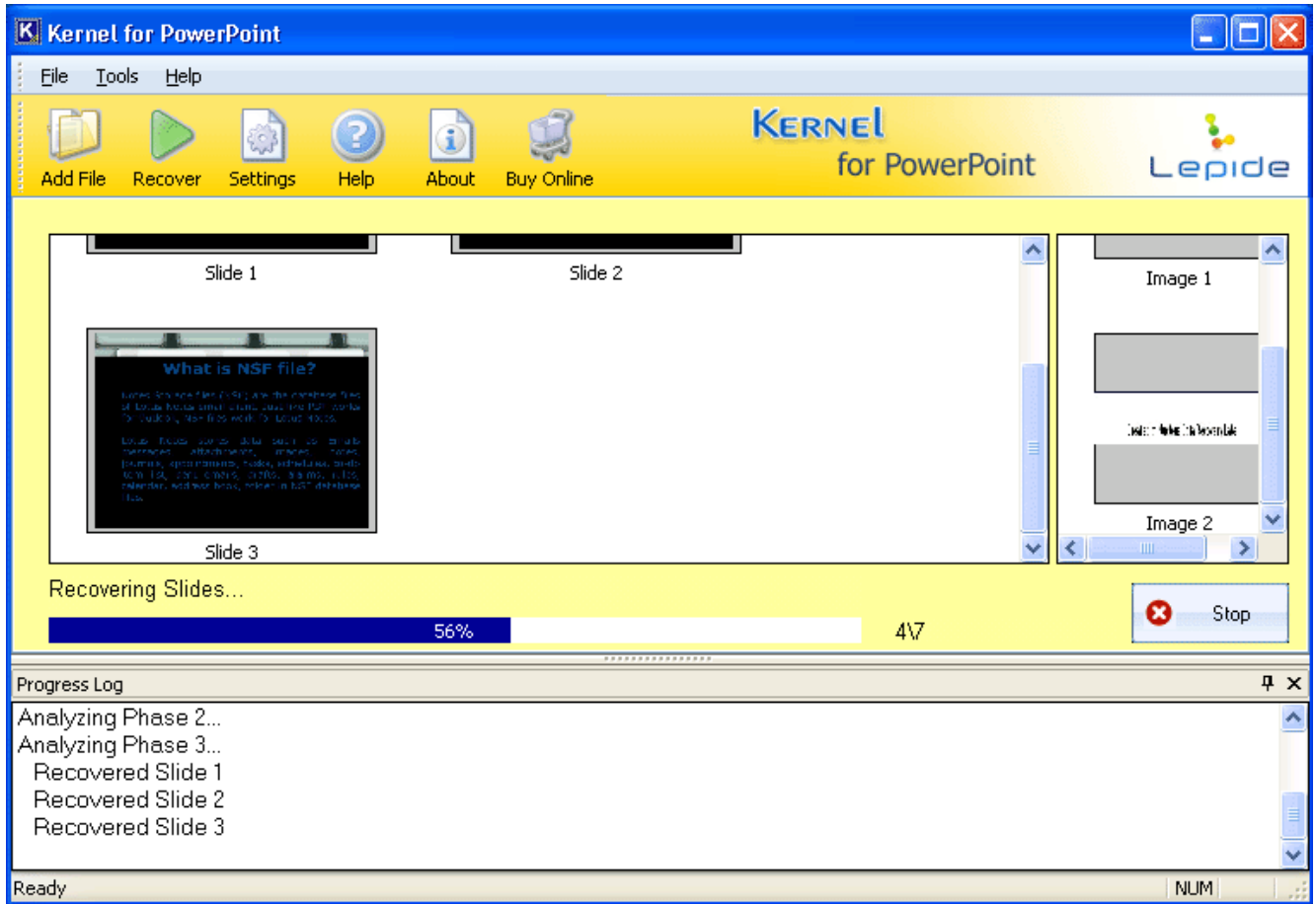


Figure 3.3.7 File Display - Integrated Mode

Note: In Standard Mode, the software recovers the data of the selected master slide.

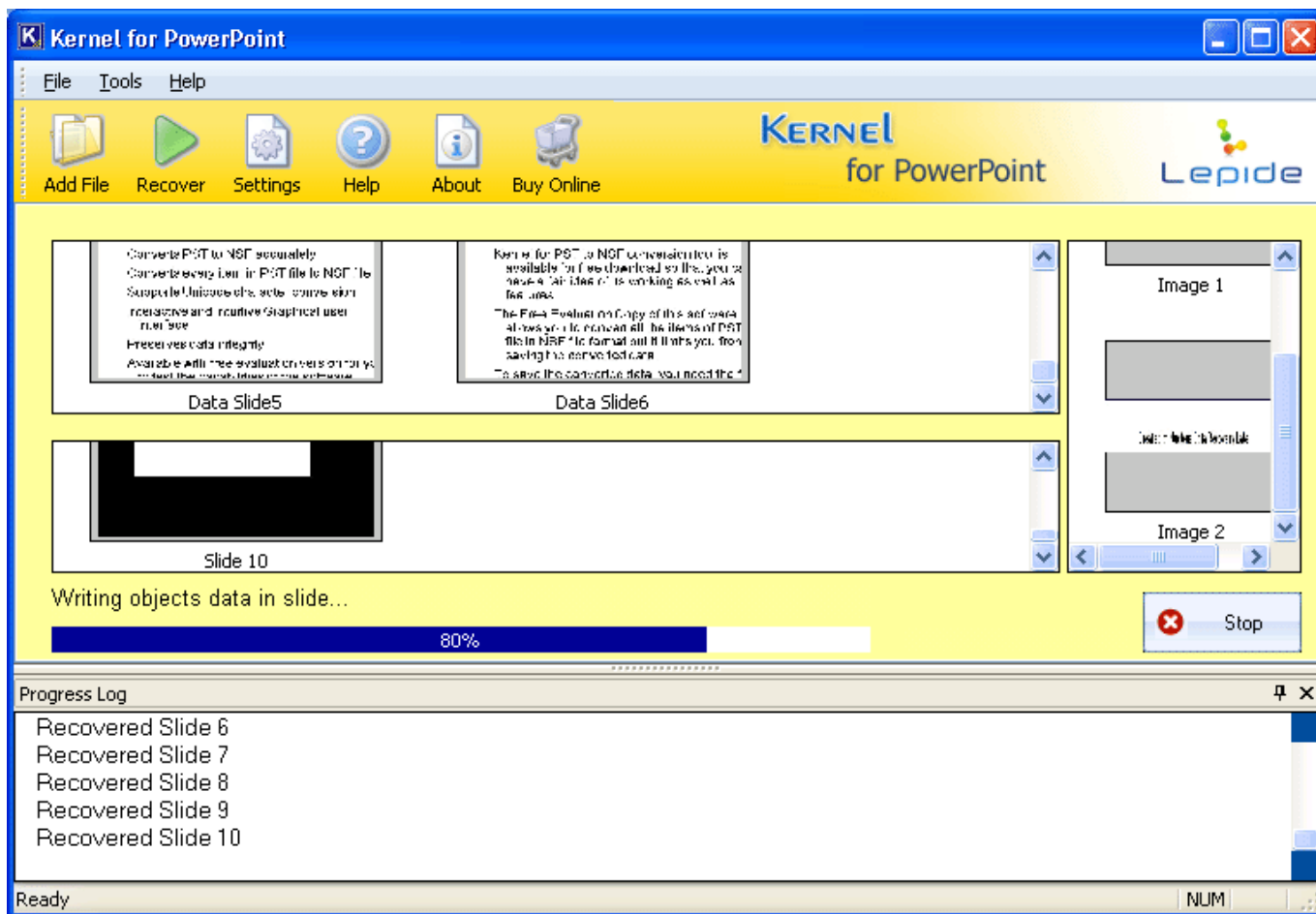


Figure 3.3.8 File Display - Standard Mode

- As soon as Kernel for PowerPoint finishes the saving process, it displays the message “**Saving Complete**” with a link that points to the location where the repaired file is saved.

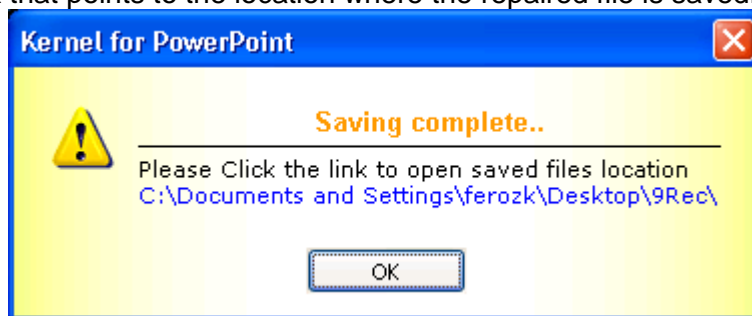



Figure 3.3.9 Saving Confirmation

 The repaired .ppt files will be saved in the folder with the prefix defined by you in the settings option.

5. Full Version

Although you can use Kernel for PowerPoint evaluation version for free and experience the capabilities of the software, there are certain features that are not available in the evaluation version.

5.1 Requirement of Full Version

By using the evaluation version of Kernel for PowerPoint, you can repair corrupt .ppt files; however, you cannot save the recovered slides of the repaired files. You can only view the preview of the recovered slides.

You will need to buy the full version of the software to save the recovered data of the repaired .ppt file

5.2 Purchasing Full Version

You can buy the full version of Kernel for PowerPoint from any one of our authorized resellers – Element5, Asknet and 2CO.

As soon the purchase transaction with our resellers gets completed, our sales team will send you an email comprising the URL to download the full version of Kernel for PowerPoint and activation details of the software.

6. Support

We have an extensive and efficient support system in place to assist our customers with all issues related to using Kernel for PowerPoint. The software comes with an embedded help manual that can be accessed by clicking **Help**→**Software Help** in the menu-bar. You can also press the F1 key on the keyboard of your computer to access the embedded help of Kernel for PowerPoint.

You can access the online help for Kernel for PowerPoint at <http://www.nucleustechnologies.com/Online-Helps.html>

View Animated Working Demo of the software at <https://www.nucleustechnologies.com/powerpoint/animatedppt.html>

We also have live support wherein you can chat with our software experts at <https://www.nucleustechnologies.com/supportcenter/>

To talk on phone with our software experts call:

Help line:

+91-9818725861

1-866-348-7872 (Toll Free for USA/CANADA)

You can also email us about your queries at;

sales@nucleustechnologies.com for Sales

support@nucleustechnologies.com for Support

contact@nucleustechnologies.com for General Queries

7. Troubleshooting

This section deals with your generic and specific queries pertaining to using Kernel for PowerPoint.

7.1 Common Issues

Why does Kernel for PowerPoint have limitations in evaluation copy? The free evaluation version of Kernel for PowerPoint is intended to enable you to experience the capabilities of the software. You will need to buy the software to save the recovered data.

7.2 Frequently Asked Questions

How to Buy Kernel for PowerPoint?

You can buy Kernel for PowerPoint online at <https://www.nucleustechnologies.com/Buy-Powerpoint-Presentation-Repair-Software.php>

I have lost my full version for Kernel for PowerPoint. Can you help me?

Please email us at sales@nucleustechnologies.com. Please include your name, address, email address, and order confirmation number (if you have it). We will be happy to help you.

How long would I need to wait for the product after purchasing it?

The delivery of the product is immediate. You will be taken to download page after you complete the purchasing process. The Activation Key and Password will be mailed to you with in next 15 minutes

When the recovery process is going on, an “ActiveX component cannot create an object” error message appears. How can I repair files?

This error message occurs due to incomplete installation of Kernel for PowerPoint software. If the message **ActiveX component cannot create an object** is displayed then you should wait for a moment and the Kernel for PowerPoint will automatically handle the error and proceed further.

8. Legal Notices

This section comprises the legal specification about Kernel for PowerPoint and the company KernelApps Private Limited

8.1 Copyright

KernelApps Private Limited, Kernel accompanied user manual and documentation are copyright of KernelApps Private Limited, with all rights reserved. Under the copyright laws, this user manual cannot be reproduced in any form without the prior written permission of KernelApps Private Limited. No Patent Liability is assumed, however, with respect to the use of the information contained herein. © KernelApps Private Limited. All rights reserved.

8.2 Trademark

Kernel ® is a copyright work of KernelApps Private Limited Windows 95®, Windows 98®, Windows ME®, Windows NT®, Windows 2000 Server®, Windows 2000 Advanced Server®, Windows 2003 Server®, Windows XP®, Windows Vista, MS-DOS and MS Office are registered trademarks of Microsoft Corporation. All other brand and product names are trademarks or registered trademarks of their respective companies.

8.3 Disclaimer

The Information contained in this manual, including but not limited to any product specifications, is subject to change without notice. KernelApps Private Limited provides no warranty with regard to this manual or any other information contained herein and here by expressly disclaims any implied warranties of merchantability or fitness for any particular purpose with regard to any of the foregoing KernelApps Private Limited assumes no liability for any damages incurred directly or indirectly from any technical or typographical errors or omissions contained herein or for discrepancies between the product and the manual. In no event shall KernelApps Private Limited, be liable for any incidental, consequential special, or exemplary damages, whether based on tort, contract or otherwise, arising out of or in connection with this manual or any other information contained herein or the use there of.

8.4 License Agreement

Kernel for PowerPoint Copyright © by KernelApps Private Limited Your Agreement to this License

You should carefully read the following terms and conditions before using, installing or distributing this software, unless you have a different license agreement signed by KernelApps Private Limited. The terms and conditions of this License describe the permitted use and users of each Licensed Copy of Kernel for PowerPoint. For purposes of this License, if you have a valid license, you have the right to use a single Licensed Copy of Kernel.

Scope of License

Each Licensed Copy of Kernel for PowerPoint may either be used by a single person or used non-simultaneously by multiple people who use the software personally installed on a single workstation. All rights of any kind in Kernel, which are not expressly granted in this License, are entirely and exclusively reserved to and by KernelApps Private Limited. You may not rent, lease, modify, translate, reverse engineer, decompile, disassemble, or create derivative works based on, Kernel, nor permit anyone else to do so. You may not make access to Kernel available to others in connection with a service bureau, application service provider, or similar business, nor permit anyone else to do so.

Warranty Disclaimers and Liability Limitations

Kernel for PowerPoint, and any and all accompanying software, files, data and materials, are distributed and provided AS IS and with no warranties of any kind, whether expressed or implied. In particular, there is no warranty for the quality of data recovered. You acknowledge that good data processing procedure dictates that any program, including Kernel, must be thoroughly tested with non-critical data before there is any reliance on it, and you hereby assume the entire risk of all use of the copies of Kernel covered by this License. This disclaimer of warranty constitutes an essential part of this License. In addition, in no event does KernelApps Private Limited authorize you or anyone else to use Kernel for PowerPoint in applications or systems where Kernel for PowerPoint failure to perform can reasonably be expected to result in a significant physical injury, or in loss of life. Any such use is entirely at your own risk, and you agree to hold KernelApps Private Limited harmless from any and all claims or losses relating to such unauthorized use.

General

This License is the complete statement of the agreement between the parties on the subject matter, and merges and supersedes all other or prior understandings, purchase orders, agreements and arrangements. This License shall be governed by the laws of the State of Delhi. Exclusive jurisdiction and venue for all matters relating to this License shall be in courts and for a located in the State of Delhi, and you consent to such jurisdiction and venue. There are no third party beneficiaries of any promises, obligations or representations made by KernelApps Private Limited herein. Any waiver by KernelApps Private Limited of any violation of this License by you shall not constitute, nor contribute to, a waiver by KernelApps Private Limited of any other or future violation of the same provision, or any other provision, of this License.